



THE JAGUAR JOURNAL

Respect, Ready, Responsible, Proud

January 20, 2017



January 25, 2017
Mandatory parent meeting for school play
6:00 pm

Johnson school
SEE FLYER ATTACHED

February 17, 2017
Professional Development Day
Early Dismissal
12:56 PM

February 20-21st
2017
NO SCHOOL
President's Day
Recess

Find us on
Facebook!
Johnson
Parent
Network



Don't forget to show your Johnson PRIDE by wearing spirit wear or school colors every Friday

Dear Parents, Guardians, and Caretakers,

It's hard to believe we are almost at the midway point in our school year! We have had many exciting events in January and we have many more in store for students and parents!

I would like to thank Mrs. Genuario for the amazing Johnson School Band Concert! I am very proud of our students and their performance at the winter concert. We had approximately 150 students participating in the performance and it was truly fantastic. On the first Thursday of the month, we celebrated our Johnson Pride Students of the Month at a breakfast hosted by the PTO. We are very fortunate to have the support of our PTO in this joint venture, supporting our whole school Positive Behavioral Interventions Support program.

Yesterday, Spark Arts hosted an assembly wherein Mr. Paul Rodgers provided students with information about our upcoming Johnson School play, *Alice in Wonderland, Jr.* The parent informational meeting for the play will be held next Wednesday, January 25th at 6:00 pm in the Johnson School Media Center.

As always, we seek to offer opportunities to partner with parents. In keeping with this goal, parents that are interested in attending the Standards Based Grading Focus Group should email me. The focus group will be meeting next Wednesday, January 25th, at 7:00 pm in the Johnson School Media Center. Additionally, I continue to host a Communications Meeting every other month. The purpose of the communications Committee is to discuss the efficacy of our current modes of communication and to plan for future endeavors. If you are interested in participating in this committee, please email me.

Finally, we are beginning to plan for our *District K-12 STEM Night* on April 18th. If you are interested in helping with this event, please email me. salerno@bethel.k12.ct.us.

Very truly yours,
Alison Salerno
Principal

Important Reminder!

As the weather continues to get colder, it is so important that your child is dressed appropriately!

We try to allow for outdoor recess as much as possible (weather permitting). If your child is in need of a winter coat, please call Kate Coffey at 203-794-8679



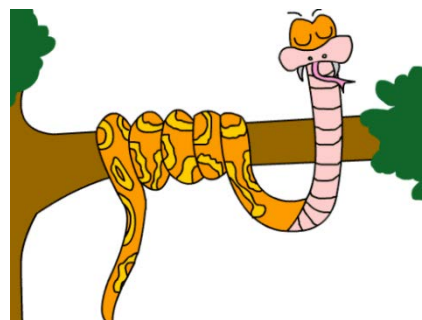
When it is necessary to delay or close school due to inclement weather or have an unscheduled early dismissal due to forecasted inclement weather, the announcement will be made over the following radio, TV stations, and websites:

WLAD AM Danbury 800 on the dial
WINE AM Brookfield 940 on the dial
WICC AM Bridgeport 600 on the dial
WEBE FM Bridgeport 108 on the dial
WEZN FM Bridgeport 100 on the dial

TV channel 3, channel 8, channel 6
Bethel Public Schools website - www.bethelk12ct.us
CT Weather website - www.ctweather.com

Johnson School STEM Update!

The Problem: Scientists in the Florida Everglades have observed a great increase in the population of Burmese pythons. The Burmese pythons have no natural predators and can lay up to 36 eggs every spring. Their large population is beginning to upset the natural balance of the Everglades ecosystem. These pythons like to eat small birds and rodents, some of which are endangered in the Everglades ecosystem. If the size of the python population continues to increase, it could mean extinction of some of the small endangered birds. The local authorities are not convinced pythons are damaging the ecosystem and are currently not willing to adopt any plans to reduce the Burmese python population size.



The Challenge: Create a blueprint of a device that will trap the invasive species of python, but will not harm or kill the python, plants, or other animals in the ecosystem. Convince the local authorities to adopt your plan by creating a presentation to explain how Burmese pythons have damaged the Everglades ecosystem.

This is just one example of the incredible STEM based activities that students in Grade 4 and 5 will be engaged in during their latest STEM units. STEM classrooms are active and vibrant places where students are challenged to ground their thinking in evidence and use their creativity to design and communicate their ideas.

Grade 5 scientists are exploring how organisms use matter and energy through a sequence of mini units or “scopes” that break the large concepts into smaller, coherent, comprehensible chunks. The scopes focus on concepts such as how plants get the materials they need for growth chiefly from air and water, the flow of energy through food webs and how ecosystems work. They will be working to make sense of these concepts by creating and using models to represent earth’s systems and transfer of energy.



Grade 4 scientists are exploring how plants and animals use their senses and interact with their world. Their scopes will have them using models to explain that animals receive different types of information through their senses, process the information in their brain, and respond to the information in different ways. They will also use evidence to construct arguments that plants and animals have internal and external structures that function to support survival, growth, behavior, and reproduction. Finally they will be designing an imaginary animal that has specific and unique ways of sensing and responding to stimuli.



R.M.T. JOHNSON SCHOOL
RESPECT • READY • RESPONSIBLE • PROUD



PTO CORNER

Fundraiser updates:

- **READING ROCKSTARS IS COMING!!!** 2/27 through 3/17
 - 2/24 Dress up like a Rock Star!
 - 3/2 Dr. Seuss Birthday, dress up!
 - 3/3 Author visit!
 - 3/10 Dress up like your favorite book character
- Keep sending in those Boxtops! We earned \$407.70!
- School Store is open Thursday mornings before school.

Upcoming PTO Events:

- The next PTO meeting will be 2/28 @ 9:15 am.

Want to get involved? Contact us to learn more, or come to one of our meetings. All are welcome, even our littlest family members.

Contact us: rmtjohnsonpto@gmail.com

SAVE THE DATE – THURSDAY, FEBRUARY 23, 2017



Parent University Rated “Excellent”

by an overwhelming majority of 2016 Attendees

“It was wonderful!” “Great opportunity...” “Very helpful!”
“...the most useful presentations I’ve ever attended!”

Don’t miss the 2017 Parent University with all the topics *you* requested, including:

- Kindergarten Orientation • Strategies to Help your Child Regulate Stress
- Navigating the Parent Portal • Internet Safety • And so many more!

Stay tuned for additional information on registration and a full list of topics offered.

Mark your calendars now for Parent University 2017
Thursday, February 23rd, 6:30-8:30 p.m. at BMS.



2017 Johnson School Musical!

Johnson School is excited to announce that we will be putting on a school-wide musical production of 'Alice in Wonderland' this spring! **Performance dates** will be Friday, May 12th at 7pm and Saturday, May 13th at 1pm and 7pm at Bethel Middle School. Rehearsals will start on Tuesday, February 7, 2017. Most rehearsals will be on Tuesdays and Thursdays. A full rehearsal schedule will be sent home at the parent meeting.

The cost to participate in the musical is \$50; everyone who participates will get a part in the play. Talents will be used both onstage and backstage.

In addition, we also rely on parents/guardians to support the production! Please consider helping us make costumes, props and set pieces as well as help organize students during rehearsals. We also need assistance during the actual production, as well as help organizing the cast party! There will be a **Mandatory Parent Meeting** for all parents/guardians on Wednesday, January 25, 2017 at 6:00 pm in the Johnson School cafeteria to meet with Production Manager, Paul Rodgers, our Director, Anthony De Poto, Music Director Erin Volpintesta, and Johnson School Principal, Alison Salerno.

Permission slips will go out the week of January 16th for students wishing to participate. If you have any questions, please email Paul Rodgers at JohnsonMusicals@gmail.com.

We are really looking forward to putting on a great show this spring!

HOW TO ACCESS E-BOOKS THROUGH DESTINY QUEST



1. Go to <http://www.bethel.k12.ct.us/>
 2. Go to schools
 - a. R.M.T. Johnson School
 - b. JES Media Center
 3. Choose on the left hand side Destiny Online Catalog
 4. Click login in the top right hand corner
 - a. Username: Your school computer username (example: 25weinalan)
 - b. Password: Your lunch number
 5. Click on Follett Shelf in the top right hand corner
 6. Look to see what E-books are available, when you find one you would like to read click on Checkout!
- Any Questions!? Ask Mrs. Weinberg or contact her at weinberga@bethel.k12.ct.us

Art Show Prep Season is Here!!!

This year's art show will be on Thursday March 16, 2017 from 5-7 p.m. at Johnson School. Every year we display thousands of artworks from the 4th & 5th graders.

There is a tremendous amount of behind the scenes work that goes into this event. Ms. McCue is looking help matt, label, and/or inventory artwork for the show.

If you can assist in the success of this year's event, please contact Ms. McCue.

McCuet@bethel.k12.ct.us

Thank you!!

Join the Bethel Wildcats

PINK
OUT

Fight Cancer!



Bethel vs Brookfield

Friday, January 20th

Junior Varsity @ 5:15

Varsity @ 7pm

Bethel High School

Admission: Kids \$3 Adults \$5

Kids get in FREE wearing a Bethel park and rec shirt OR wearing pink
We will be raffling off a Smart TV at halftime of the Varsity game with
proceeds going to Cancer Research.

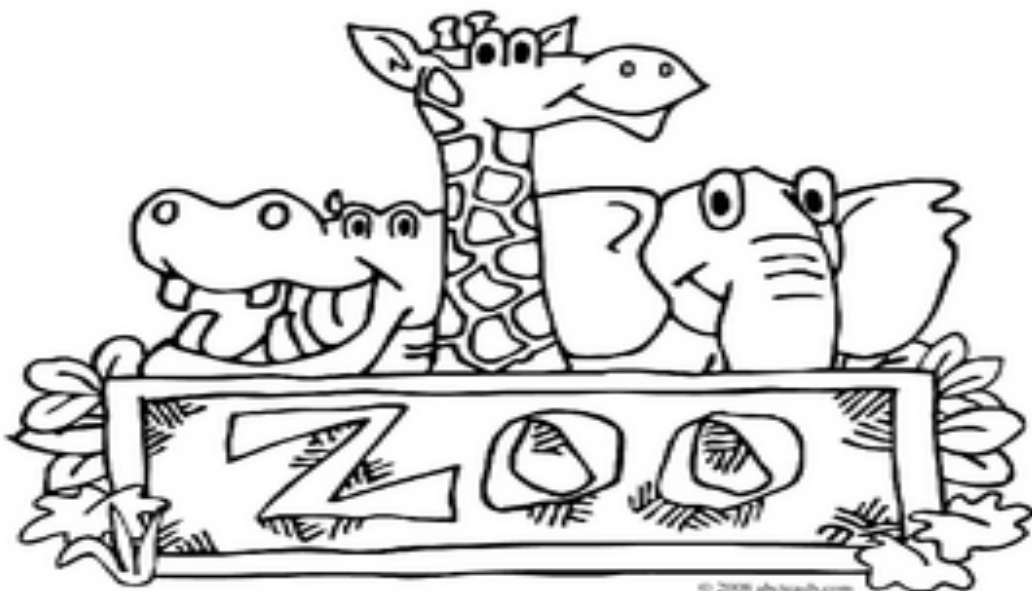
SAVE THE DATE

The Fourth Grade Spring Field Trip to
the Bronx Zoo is

Thursday, May 18, 2017.

The cost is \$45.00 per student or
chaperone.

Further information will be sent
home in March 2017.



SAVE THE DATE

What: Fifth Grade Field Trip
When: Wednesday, May 31st, 2017
Depart: 7:30 am **Return:** 5:30 pm
Where: Old Sturbridge Village
1 Old Sturbridge Village Road
Sturbridge, MA 01566

What is Old Sturbridge Village?

Old Sturbridge Village is the largest outdoor history museum in the Northeast. It depicts a rural New England town of the 1830s. Students will be invited to visit more than 40 original buildings, including homes, meetinghouses, a district school, country store, bank, working farm, three water-powered mills, and trade shops - all situated on more than 200 scenic acres. They will meet heritage breed farm animals and interact with authentically costumed staff.

Cost: \$40.00 per student.

This cost includes a Coach bus and OSV fees. If you are interested in chaperoning, please contact your child's homeroom teacher ASAP. There are a limited number of spaces available. Chaperones will also have to pay the \$40.00. We will not be collecting money for the trip at this time. A formal permission slip will go home later in the year, when it is time to collect money and give out additional information about the trip, departure and pick-up.

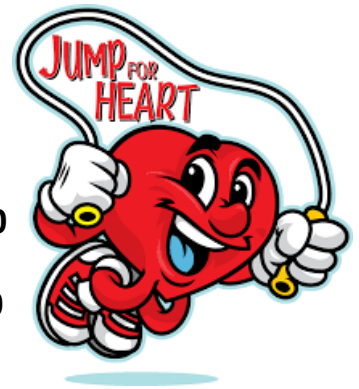
Go **Wild** for Heart Health~ Johnson School

Jump on board with the American Heart Association!

Jump Rope For Heart is coming to our school!

Wednesday, February 15th - Fifth Grade from 3:00-4:00

Thursday, February 16th - Fourth Grade from 3:00-4:00



Your support saves lives!

Click on: [Johnson School Jump Rope For Heart Page](#)

Any parents who are willing to help out on

Thursday, February 16th please email

jaquess@bethel.k12.ct.us

WE LOOK FORWARD TO CELEBRATING AT THIS EVENT!



SHAPE America and the American Heart Association collaborate on the Jump Rope For Heart and Hoops For Heart programs.

BETHEL PARKS & RECREATION

Activities for Spring 2017

Check out our
ONLINE REGISTRATION
At www.bethel-ct.gov

- *Go to the Parks and Rec. Department
- *Click on the NEW Program Registration Link

Online registration opens
Wednesday, February 8th
at 9:00am

Credit Cards now accepted



REGISTRATION DEADLINE: **MONDAY, FEBRUARY 27th**

*****NO REFUNDS AFTER FIRST CLASS *****
Cancellations must be made in writing.



Like us on Facebook at Bethel Parks and Recreation

CLIFFORD J. HURGIN MUNICIPAL CENTER, 1 SCHOOL STREET, BETHEL, CT 06801
PHONE: 203-794-8531 • FAX: 203-778-7519

REGISTRATION INFORMATION

SPRING REGISTRATION

DATE: WEDNESDAY, FEBRUARY 8TH
TIME: 9:00 A.M. – 4:30 P.M.
LOCATION: PARKS & RECREATION OFFICE
DEADLINE: MONDAY, FEBRUARY 27TH

***Please note: The Municipal Center will be closed on Monday, February 20th, for Presidents Day.**

All participants must be registered before the first day of the program. Once a program has begun no registrations will be accepted.

SPRING SPORTS REGISTRATION

Registration for **Baseball, Soccer, Lacrosse and Softball** are done online through their websites.

DO NOT fill out a Parks & Rec. registration form for these spring sports as they each have a special form of their own, available at that registration.



OFFICE HOURS

8:30 a.m. – 4:30 p.m.

Please note: The night staff is not permitted to take registrations or payments.



PHONE IN REGISTRATION

If you do not have access to online registration please feel free to contact our office Monday-Friday 8:30am-4:30pm. We will be happy to process your registration over the phone.



LATE FEE

A \$10 late fee per program will be assessed for all registrations submitted after the deadline date. *Programs may reach maximum capacity before the deadline date – early registration is recommended.*

NON-RESIDENT

Registrations for non-residents will not be accepted until February 17th for an additional \$15.00 fee per quarter.

AGE REQUIREMENT

Children must meet the age requirement within the session of the program for which they're registered. Proof of age may be required.

REGISTRATION INFORMATION

SENIOR CITIZEN DISCOUNT



Participants ages 60 and up are eligible for a \$10 discount **per person** (not activity), excluding trips and health exercise classes under \$50.00.

DEPARTMENT POLICY

All Bethel Parks and Recreation programs are inclusive. We are committed to assuring equal access to programs, activities and services to all individuals. During the course of our programs we may be, at times, taking photos or filming the activities and its participants for instructional purposes or Public Television. For more information, please contact the office at 794-8531.

CANCELLATION POLICY

If Bethel schools are cancelled or have an early dismissal due to weather, all Parks and Recreation programs will be cancelled. Athletic fields may close due to inclement weather. Cancellation information may be obtained by calling us at 794-8531 and choosing option #1.

****Missed classes will be made up at the end of the session.****

WEEKEND CANCELLATIONS

Please contact your SPORTS ASSOCIATION or COACH.

Bethel Baseball Association

www.bethel-baseball.com

Bethel Youth Soccer Association

www.bethelsoccer.org

Bethel Softball Association

www.leaguelineup.com/bethelsoftball

Bethel Youth Lacrosse Association

www.bethellacrosse.com

Bethel Youth Football

www.bethelyouthwildcats.com

Bethel Youth Wrestling

www.BethelYouthWrestlingClub.com



REFUND POLICY /RETURN CHECK

Return check charge fee is \$28.00. All refunds are subject to a \$10 administration surcharge.

If the Parks & Recreation Department cancels a program a full refund is given. No refunds will be given after the first class, unless extenuating circumstances arise.

STAFF

EILEEN EARLE, DIRECTOR
RACHAEL MCGRATH, RECREATION SUPERVISOR
JANET BEOTE, SECRETARY
MAUREEN DEFAZIO, PROGRAM COORDINATOR

PARKS STAFF

TROY ANDROS
SEAN FESH
MATT HUNT

COMMISSION

MEGHAN O'CONNOR, CHAIRPERSON
PAT MORTON
SCOTT PERRY
KEVIN RILEY
KEEGAN SHAW
LOU VALENTI

NYSCA CLINIC & Background Check

All parents interested in coaching or helping out with any sports **MUST** be certified by the NYSCA, and have a yearly background check. You may renew, add a sport or take the initial clinic online. You will need your membership number if you're currently certified.

You can find a link on how to get NYSCA certified, and the link to our online background check on our website:

1. www.bethel-ct.gov
2. Go to the Parks and Rec. Department
3. Under Additional Links click on "Coaches Certification and Background Check"



Please contact our office if you have any questions at 203-794-8531.

Special Events



Annual Easter Egg Hunt

Join the Parks & Recreation Department at the Municipal Center on Saturday, April 8th. Additional activities include a visit from the Easter Bunny, and our annual jellybean counting contest! We will also have coffee & donuts!!

Stop by the office beginning March 1st to make a guess. We will announce the winner at the conclusion of the Easter Egg Hunt. The fun begins at **10:00 a.m.** for children in preschool through 4th grade.

Kids Coloring Page

CALLING ALL KIDS!

Join in on the Parks & Recreation fun coloring activity. Show us your coloring skills using the spring picture included in this flyer, return it to the Parks & Recreation office between April 3rd and April 7th, and it will be posted in the Municipal Center hallway. At the time it's dropped off, you will receive a participation candy prize.

Summer Camp Information

Summer Camp 2017

As a convenience to our residents, **REGISTRATION** for Summer Camp will begin **Monday, April 17th**.

Information regarding camp dates and fees will be distributed through the Board of Education email system during the month of March and posted online.



Summer Employment

Bethel Parks and Recreation is accepting applications for **potential** summer employment opportunities. If you enjoy working with children and are looking for a summer job, come and apply as a camp counselor.

Applicants must be 16 years old and able to commit to the entire camp schedule. Apply at the Parks and Recreation office in the Municipal Center. Applications **MUST** be received by Friday, April 7th & can be found on the Parks & Recreation Website.

Counselor in Training

This is a counselor in training program for boys and girls who are 15 years old or going into 10th grade and who would like to gain experience working with children.

This is a **volunteer program**; individuals must express a desire to work with children and want to learn how a summer playground program operates. Interested individuals may pick up an application at the Parks and Recreation office and be able to commit to two weeks of camp. Application deadline is May 12th & can be found on the Parks & Recreation Website.

Adult Programs

Bethel Women's Softball

Registration for the summer 2017 Woman's Softball League begins **Monday, February 6th** from 9:00-4:30 in the Park & Recreation office. Please USE THE WOMAN'S SOFTBALL REGISTRATION FORM, AVAILABLE AT REGISTRATION, **NOT** THE PARKS & RECREATION FORM.

Checks should be made payable to "Bethel Women's Softball League". Registration forms are available on their Facebook page: Bethel Softball Women, or at the Park & Rec. office. Must be 18 by May 31st, 2017

You can also register ONLINE at:

<https://active.leagueone.com/Olr/Pages/Welcome.aspx?ClubId=15802>

Registration ends May 19th all registrations after this date will need to be reviewed and approved by the board.

FEE: \$ 45.00 resident & non-resident



Art for Adults

An art class for adults of various levels, instruction will be given on both an individual and class basis.

Beginner students are welcome and participants may work in the medium of their choice. Contact Adele at 744-7690 with any questions.

Day: Monday Date: 3/6-5/1 (8 wks.)

Time: 7:00 – 9:00 p.m. No Class: 4/10

Fee: \$75.00

Place: Senior Center Ceramics Rm.

Instructor: Adele Moros

Tai Chi Ch'uan -

These movements train you for balance and body awareness, leading to confident ease of movement in everyday life. Tai chi and Qi Gong is safe for all levels of physical ability! Just some of the benefits of practicing Tai Chi and Qi Gong regularly:

Reduced Stress

Gentle Aerobic Exercise

Reduced Blood Pressure

Improved Immune Function

Reduced Risks of Injury

More Efficient Breathing

Ages: 18 & Over

Day: Thursday

Dates: 3/9-5/4 (8 classes)

Time: 7:00 – 8:00 p.m. No Class: 4/13

Fee: \$85.00

Place: Municipal Center Stage

Instructor: Nancy Ryan, 20 years experience studying and practicing Tai Chi and presently teaches weekly at Ann's Place – The Home of I CAN in Danbury.

Adult Programs, continued



Body by Bethel

Have fun with a certified personal trainer leading you in a Total Body Workout designed to increase your strength, balance and flexibility.

We use weights, medicine balls, steps, balance disks, and bands.

Minimum of 10 participants per class.

Day: Tues. & Thurs. Dates: 3/7-5/4 (16 classes)
 Time: 9:00- 10:00 a.m. No Class: 4/11, 4/13
 Fee: \$85.00 Place: Municipal Center Gym
 Instructor: Penny Cidri

Shape UP-Get Ready

Get ready to tone your abs, arms, buns and legs and get a killer cardio workout using combinations of all types of weight work and cardiovascular challenges.

The class provides overall physical conditioning that can improve endurance, strength, flexibility, coordination and balance.

Minimum of 10 participants per class.

Day: Tuesday Dates: 3/7-5/2 (8 classes)
 Time: 6:00 - 7:00 p.m. Place: Municipal Center G.P. Room
 Fee: \$45.00 No Class: 4/11
 Instructor: Laurie Leavy

Pilates

Strengthen core muscles through controlled movement and breathing. Pilates leads to improvement in posture, flexibility and body awareness. Modifications provided for all levels. Please bring a yoga mat, towel and one set of 2-5 pound weights.

Day: Wednesday Dates: 3/8-5/3 (8 wks.)
 Time: 6:30 – 7:30 p.m. No Class: 4/12
 Fee: \$80.00 Place: Municipal Center Stage
 Instructor: Debbie Nichols

Children's Self Defense

r.a.d KIDS (resist aggression defensively) is a personal empowerment safety education class for children in **grades K-3**, that strengthens family, encourages physical fitness and teaches core safety values to live by through its program.

Fun, activity-based programs include lecture, safety drills, muscle memory exercises and dynamic simulation with a focus on personal safety at home and school, realistic defense against abduction, good-bad-uncomfortable touch, stranger awareness and personal empowerment. Wear comfortable clothing and sneakers as there will be some low-impact physical activities. Class is LIMITED to 10.

Days: Tuesday Dates: 3/7-5/2 (8 wks.)
 Time: 4:00-5:00p.m. No Class: 4/11
 Fee: \$15.00 Place: Berry School Cafeteria
 Instructor: Detective Lynn Morris, Bethel Police Dept



Martial Arts

Lil Dragons (Ages 5-6) **

Junior Beginners (Ages 7-12)**

****This program is a one time ONLY sign-up. If you have taken this class in the past – you cannot take it again.****

This program will introduce your child to the great benefits of the martial arts like focus, discipline, respect, physical fitness, confidence, self-defense and safety. The drills and skills are age and maturity specific and the kids have a great time while doing it. **Class is twice a week.**

Days available: (Must write down which 2 days

Lil Dragons ages 5-6

Mon. 4:45-5:15
 Tues. 5:30-6:00
 Wed. 4:45-5:15
 Thurs. 5:30-6:00
 Fri. 4:00-4:30



Junior Beginners ages 7-12

Mon. 5:15-6:00
 Tues. 6:00-6:45
 Wed. 5:15-6:00
 Thurs. 6:00-6:45
 Fri. 4:30-5:15

Dates: 3/6-5/5

No Class: 4/10-4/14

Fee: \$69 (6 weeks)

Place: Karate America

Students must purchase a uniform from Karate America before starting the program; please call: 203-792-1050

Maximum: 10 students

Youth Sports

Youth Sports

Come join an after school youth sports program to introduce and play a variety of sports. Children **grades K-3** will learn a variety of sports such as soccer, floor hockey, kickball, and wiffle ball. Each week will bring a new activity. Class sizes are limited. Instructor: Parks and Rec. Staff

Berry School

Grades K-1

Day: Wednesday Dates: 4/5-5/31 (8 wks.)
 Time: 3:30 – 4:30 p.m. No Class: 4/12
 Fee: \$60.00 Place: Berry School Gym

Grades 2-3

Day: Tuesday Dates: 4/4-5/30 (8 wks.)
 Time: 3:30 – 4:30 p.m. No Class: 4/11
 Fee: \$60.00 Place: Berry School Gym

Rockwell School

Grades K-1

Day: Monday Dates: 4/3-6/5 (8 wks.)
 Time: 3:30 – 4:30 p.m. No Class: 4/10, 5/29
 Fee: \$60.00 Place: Rockwell Gym

Grades 2-3

Day: Thursday Dates: 4/6-6/1 (8 wks.)
 Time: 3:30 – 4:30 p.m. No Class: 4/13
 Fee: \$60.00 Place: Rockwell Gym

American Red Cross



Babysitting Course

American Red Cross Babysitting Course for any youth **11 years old and up**. The class will offer students all the necessary tools to become a reliable and safe babysitter.

Students will learn basic childcare, safety precautions, child development, appropriate toys and more. Students will receive a handbook with all the information needed to serve as a reference.

Please bring a lunch and drink to class. Participants have to meet requirements of the course to receive certification.

Day: Saturday Date: 5/13
Time: 9:00 –3:00 p.m.
Fee: \$70.00 (supplies included)
Place: Senior Center Ceramics Room
Instructor: Peggy Boyle



Gymnastics



Fun with Tumbling

This class is an introduction to all phases of gymnastics for children **3 & 4 years old**. Tumbling, vault, bars and beams will be explored.

Children will be divided into groups and rotate among the equipment with instructors. Note: This is a parent **drop-off** class and children must be potty trained.

3 year olds

Day: Saturday Dates: 3/11-5/13 (8 wks.)
Time: 9:00 – 9:45 a.m. No Class: 4/8, 4/15
Fee: \$55.00 Place: Municipal Center G.P. Rm.

4 year olds

Day: Saturday Dates: 3/11-5/13 (8 wks.)
Time: 9:45 –10:30 a.m. No Class: 4/8, 4/15
Fee: \$55.00 Place: Municipal Center G.P. Rm.
Instructor: Becca Lienhardt

Fun with Gymnastics

This class offers further exploration on all four apparatuses in gymnastics. Children will be divided into skill levels and rotate in groups among floor, vault, beam and bars.

Girls in the ages 7 & up class are encouraged to wear leotards with shorts, pants or tights and wear long hair pulled back. Boys may wear typical gym attire.

5 & 6 year olds

Day: Saturday Dates: 3/11-5/13 (8 wks.)
Time: 10:30–11:30 a.m. No Class: 4/8, 4/15
Fee: \$65.00 Place: Municipal Center G.P. Rm.

Ages 7 & up

Day: Saturday Dates: 3/11-5/13 (8 wks.)
Time: 11:30–12:30 a.m. No Class: 4/8, 4/15
Fee: \$65.00 Place: Municipal Center G.P. Rm.
Instructor: Becca Lienhardt

Tennis

Bethel welcomes back Camp Director Greg Sansonetti for his 10th season alongside his exceptional adult staff. Greg, based in Fairfield County, brings 20+ years worth of tennis teaching experience. For more information on Bethel tennis programs, contact Greg at 203-414-9453 or visit www.fairfieldcountytennis.net

Pee Wee Clinic: Ages 3-4. Focus is on the development of hand-eye coordination in fun game situations

Junior Tennis Camp: Ages 5-7 & 8-12. The focus will be on forehand, backhand, volley and serve. Campers will also have the option to participate in cross-training sports for 20 minutes. Children should bring a nut-free snack.

Junior Tennis Clinic: Ages 13-16. Beginners/Advanced Beginners will focus on forehand, backhand, volley and serve in game situations. The Advanced Beginners will continue to develop their strokes in game situations.

EARLY SPRING TENNIS

Classes will be held on **SATURDAYS** at the Tennis courts by the HS baseball field. Minimum of 3-4 participants.

Session #1 will be held on March 25, April 1 & 8. (3 weeks)

Session #2 will run from April 29 – June 3 (5 weeks)

RAIN MAKE-UPS:

Session #1 April 15th & 22nd (if necessary)
Session #2 Rain make-up extends session.

NO CLASS DATES:

Session #2 May 27th



PEE WEE CLINIC

Session #1 Fee: \$40 11:15-11:45 am
Session #2 Fee: \$65 10:30-11:00 am

JUNIOR TENNIS CAMP

Session #1 Fee: \$99 11:45-1:45 pm
Session #2 Fee: \$159 11:00-1:00 pm

JUNIOR TENNIS CLINIC

Session #1 Fee: \$65 1:45-2:45 pm
Session #2 Fee: \$105 1:00-2:00 pm



Non-residents: Additional \$15 fee per program.
Bring own racquet or racquets are available for sale through instructors.

****Weekend cancellations/after hours at 203-283-5629****

Art & Performance Programs

Children's Fine Arts



These exciting art classes cover everything from drawing to painting, sculpture, and mixed media. Kids in **grades K-3** are invited to come get their creative juices flowing and join in the fun!

The instructor provides all supplies, so all you need to do is come to class! Our goal is to help develop your own style and to have fun creating beautiful pieces of artwork that are an extension of your own individual creativity!

Day: Thursday Dates: 3/9-5/4 (8 wks.)
Time: 4:00 –5:00 p.m. No Class: 4/13
Fee: \$75.00 (supplies included)
Place: Senior Center Ceramics Room
Instructor: Adele Moros

Art for Children



This exciting and creative art class is geared towards young artists in **grades 4 – 8** who enjoy drawing and painting!

Students will have FUN using pastels, watercolors and tempera in development of their individual talents. Composition, design, color and technique are also emphasized.

Day: Tuesday Dates: 3/7-5/2 (8 wks.)
Time: 4:00 –5:30 p.m. No Class: 4/11
Fee: \$75.00 (supplies included)
Place: Senior Center Ceramics Room
Instructor: Adele Moros

Let's Act!!

In this dynamic 8-week class students will enhance their creativity and build confidence while learning the fundamentals of theater through a variety of activities including improvisation and theater games.

Students should wear comfortable clothing and come prepared to have fun!!

Grades 4 - 8

Day: Saturday Dates: 3/11-5/13 (8 wks.)
Time: 9:30-10:30 a.m. No Class: 4/8, 4/15
Fee: \$75.00
Place: Senior Center Cafeteria
Instructor: Beth Salvador

Teen Improv. & Acting

If you have a young performer who wants to dive into the world of theatre, then this class is a great way to explore your child's creativity and imagination. Here students will use various forms of improvisation (both comedic and dramatic) to help the young actor use their minds in creating various characters, scenes and themes.

Grades 8-12

Day: Monday Dates: 3/6-5/8 (9 wks.)
Time: 6:15-7:30 p.m. No Class: 4/10
Fee: \$100.00
Place: Municipal Center Stage
Instructor: Anthony Depoto, innerAct Theatre

Dance Programs

Seven Star School of Performing Arts

The Seven Star School of Performing Arts is committed to today's complete performer. They care as much about training young performers as they do about educating responsible, dynamic leaders.

Dress Code

Girls, pink leotard with tights, pink ballet/jazz shoes, and tan tap shoes.

Boys, black shirt, black shorts or pants and black shoes.

All Classes will be on the Municipal Center Stage.

****Classes MAY be combined if minimum numbers are not met****



Broadway Babies

This introductory program for **ages 3-4 years** old is designed to enhance rhythm skills, coordination, musicality and a genuine love for the art of dancing, singing and acting.

The 2-hour class contains ballet, tap, tumbling, singing and acting. Please bring a light snack. There will be a parent observation during the last class of the session.

Day: Friday Dates: 3/10-5/5 (8 wks)
Time: 10:15 -12:15 p.m. No Class: 4/14

Day: Friday Dates: 3/10-5/5 (8 wks)
Time: 11:15 -1:15 p.m. No Class: 4/14

Fee: \$130 Instructor: Jacqueline Madera

Pre-Dance

This introductory class for children **ages 3-4 years** old is designed to enhance rhythm skills, coordination, musicality and a genuine love for the art of dance.

Basic ballet, tap and tumbling skills are offered in this one-hour class. There will be a parent observation during the last class of the session.

Day: Friday Dates: 3/10-5/5 (8 wks)
Time: 10:15 -11:15 p.m. No Class: 4/14

Day: Friday Dates: 3/10-5/5 (8 wks)
Time: 12:15 -1:15 p.m. No Class: 4/14

Fee: \$85 Instructor: Jacqueline Madera

Hip Hop

This class will introduce a series of hip hop moves set to modern, trendy, and age appropriate music. **Dress Code** for both boys and girls: comfortable clothing and sneakers. There will be a parent observation during the last class of the session.

Ages: 5 – 7

Day: Friday Dates: 3/10-5/5 (8 wks)
Time: 5:30 – 6:15 p.m. No Class: 4/14

Ages: 8 – 11

Day: Friday Dates: 3/10-5/5 (8 wks)
Time: 7:15 –8:00 p.m. No Class: 4/14

Fee: \$65 Instructor: Jacqueline Madera

Dance programs, continued

Ballet, Tap, Jazz

Basic ballet, tap and jazz will be taught during this class. This is an introductory program designed to enhance coordination, rhythm and musicality. There will be a parent observation during the last class of the session.

Ages: 5 – 7

Day: Friday Dates: 3/10-5/5 (8 wks)
Time: 4:30-5:30 p.m. No Class: 4/14

Ages: 8 – 11

Day: Friday Dates: 3/10-5/5 (8 wks)
Time: 6:15-7:15 p.m. No Class: 4/14
Fee: \$85 Instructor: Jacqueline Madera

Saturday Dance!

These dance classes from Seven Stars will run for **8 weeks**, and will conclude with a **parent observation during the last class**.

All classes will be on the Municipal Center Stage.

Ballet & Tap

Basic ballet and tap will be taught during this introductory 8 week class for children ages 3 – 4. This class is designed to enhance rhythm skills, coordination, musicality and a genuine love for the art of dance!

Ages: 3 & 4

Day: Saturday Dates: 3/11 – 5/13 (8 wks.)
Time: 9:00-9:45 a.m. No Class: 4/8, 4/15

Ages: 3 & 4

Day: Saturday Dates: 3/11 – 5/13 (8 wks.)
Time: 9:45-10:30 a.m. No Class: 4/8, 4/15
Fee: \$65 Instructor: Janet DePaul



Jazz & Hip Hop

Basic jazz moves will be taught, and hip hop moves set to modern, trendy, and age appropriate music.

Dress Code for both boys and girls is a black t-shirt, black shorts or pants and black sneakers.

Ages: 7 & older

Day: Saturday Dates: 3/11 – 5/13 (8 wks.)
Time: 10:30-11:30a.m. No Class: 4/8, 4/15

Ages: 5 & 6

Day: Saturday Dates: 3/11 – 5/13 (8 wks.)
Time: 11:30-12:30p.m. No Class: 4/8, 4/15
Fee: \$85 Instructor: Janet DePaul

Toddler Programs (Parent stays)

Tot Tunes

A musical program for children: **18 months – 3 years** old. The children will learn songs, poems and finger plays, play rhythm instruments and move to music while developing rhythm, coordination and listening skills.



Parents will accompany the child in class. Classes are limited to 12 children per class.

Day: Thursday Dates: 3/9 – 5/4 (8 wks)
Time: 10:00-10:30. No Class: 4/13
Fee: \$55.00 Place: Municipal Center Stage
Instructor: Julie Wax



Mix-it-up

This fun and exciting program will combine both arts and crafts with fun activities and is open to all 2-2 ½ year olds and their parent.

It will be a great way *for both you and your toddler* to meet and make new friends.

Day: Friday Dates: 3/10 – 5/5 (8 wks.)
Time: 9:00 –10:30 a.m. No Class: 4/14
Fee: \$65.00 Place: Municipal Center Gym
Instructor: Sharon DiBuono

Just You & Me – Fun with Games

Open to all **2– 2 ½ year olds**. This fun and exciting program will introduce games such as red light-green light, duck, duck goose, tag, parachute games and many more.

Come have an **ACTIVE** and **fun time with your child** in a safe and controlled environment.

Day: Wednesday Dates: 3/8 – 5/3 (8 wks.)
Time: 9:00 –10:00 a.m. No Class: 4/12
Fee: \$55.00 Place: Municipal Center Gym
Instructor: Sharon DiBuono

Preschool Programs (Drop Off)



Story Time Crafts

This class is for children ages **2 ½ - 3 ½ years old**. The children will enjoy a fun morning listening to a story. They will then make a craft that relates to the story they just heard!

Please note that **parents do not stay** for this program. **CHILD MUST BE POTTY TRAINED.**

Day: Friday Dates: 3/10 – 5/5 (8 wks.)
Time: 10:30–11:45 a.m. No Class: 4/14
Fee: \$65.00 Place: Municipal Center Gym
Instructor: Sharon DiBuono

Preschool Programs (Drop Off)

Crafts on the Go

Children ages **2 ½ - 3 ½ years old** will enjoy a story and related craft followed by gym time to run and play with their friends.



Please note that **parents do not stay** for this program.

CHILD MUST BE POTTY TRAINED.

Day: Monday Dates: 3/6 – 5/11 (8 wks.)
Time: 11:30-1:00 p.m. No Class: 4/10
Fee: \$70.00 Place: Municipal Center Gym
Instructor: Sharon DiBuono

Lunch Bunch

Children ages **2 ½ - 5 years old** bring lunch or a snack, eat with your friends and unwind on a fun afternoon filled with free play, art projects and other fun games.



It's all about fun! So come and have a good time.

Please note that **parents do not stay** for this program.

CHILD MUST BE POTTY TRAINED.

Day: Thursday Dates: 3/9 – 5/4 (8 wks.)
Time: 11:45–1:00 p.m. No Class: 4/13
Fee: \$65.00 Place: Municipal Center Gym
Instructor: Sharon DiBuono

Games for Tots

Children ages **2 1/2 - 5 years old** will learn and play fun playground games. Come play games such as red light-green light, duck duck goose, tag, parachute games and many more.

Please note that **parents do not stay** for this program.

CHILD MUST BE POTTY TRAINED.

Day: Friday Dates: 3/10 – 5/5 (8 wks.)
Time: 12:00 –1:00 p.m. No Class: 4/14
Fee: \$60.00 Place: Municipal Center Gym
Instructor: Sharon DiBuono

Creative Movement

Enjoy a variety of activities from moving to various types of music. We use the parachute, balls and beanbags, tell stories and do crafts.

Open to all **2 ½ -5 years olds.**
Must be of age by January 1st, 2017.



Please note that **parents do not stay** for this program.
CHILD MUST BE POTTY TRAINED.

Day: Monday Dates: 3/6 – 5/1 (8 wks.)
Time: 9:00-11:30 a.m. No Class: 4/10
Fee: \$85.00 Place: Municipal Center Gym
Instructor: Sharon DiBuono

Preschool Programs (Drop Off)

Fun On The Run!!

Open to all **2 1/2 - 5 year olds.** This is an open gym/free play activity, where your child will have an opportunity to burn off some energy with all their friends.

Activity stations will be out in the gym, and children will have the freedom to move to each activity. There will be some organized activities, such as parachute games, red light green light, and more!!

Please note that **parents do not stay** for this program.

CHILD MUST BE POTTY TRAINED.

Day: Monday Dates: 3/6 – 5/1 (8 wks.)
Time: 1:00-2:30 p.m. No Class: 4/10
Fee: \$55.00 Place: Municipal Center Gym

Day: Thursday Dates: 3/9 – 5/4 (8 wks.)
Time: 1:00-2:30 p.m. No Class: 4/13
Fee: \$55.00 Place: Municipal Center Gym
Instructor: Sharon DiBuono

Creative Tiny Tots

This is a creative preschool program for boys and girls **ages 3 - 5 by March 31, 2017** that will involve an introduction to letter, numbers, shapes, colors, craft projects, stories, games and music. Children should bring a small snack with them.

Please note that **parents do not stay** for this program.

CHILD MUST BE POTTY TRAINED.

Day: Tuesday Dates: 3/7 – 5/2 (8 wks.)
Time: 9:00 –11:30 a.m. No Class: 4/11
Fee: \$85.00 Place: Municipal Center Gym

Day: Tuesday Dates: 3/7 – 5/2 (8 wks.)
Time: 12:00 –2:30 p.m. No Class: 4/11
Fee: \$85.00 Place: Municipal Center Gym

Day: Wednesday Dates: 3/8 – 5/3 (8 wks.)
Time: 10:00–12:30 p.m. No Class: 4/12
Fee: \$85.00 Place: Municipal Center Gym

Day: Wednesday Dates: 3/8 – 5/3 (8 wks.)
Time: 12:30 –3:00 p.m. No Class: 4/12
Fee: \$85.00 Place: Municipal Center Gym
Instructor: Sharon DiBuono

Spring Break Preschool Camp

A daily camp program for **children ages 3 - Kindergarten. (3 year olds must be 3 by May 30, 2016)** Children will be separated by age the first day of camp.

Activities will include arts and crafts, games and various activities. Please bring a lunch & snack daily. Camp will be held at the Municipal Center.

Children must be potty trained.

Day: Mon. – Thur. Dates: 4/10 - 4/13
Time: 9:00 –1:30 p.m.
Fee: \$100.00
Place: Municipal Center GP Room
Instructor: Sharon DiBuono



www.bethelsoccer.org

P.O. Box 178, Bethel, CT 06801

2017 Spring Season Registration

- Registration:** Pay with a credit card on the Bethel Soccer website: www.bethelsoccer.org until March 31, 2017.
- Ages:** 4 ½ by the start of the season through 8th grade.
- Amount:** \$85 per child (\$170 per family maximum - (excluding travel soccer fees). Checks should be made payable to "BYSA". Late registrations are subject to space limitations.
- Schedule:** Saturdays: April 15th – June 17th, (Excluding Memorial Day)
- | | |
|---------------|---|
| 8:30-10:00am | (Boys 2 nd -3 rd grade) – Majors |
| 8:30-10:00am | (Girls 2 nd -3 rd grade) – Majors |
| 9:00-10:00am | (Boys Pre-K/K) – Rookies |
| 10:00-11:00am | (Girls Pre-K/K) – Rookies |
| 10:15-12:00pm | (Girls 4 th -8 th grade) -- Seniors |
| 10:15-12:00pm | (Boys 4 th -8 th grade) – Seniors |
| 11:00-12:00pm | (Girls "Experienced K"/1 st grade) – Minors |
| 12:00-1:00pm | (Boys "Experienced K"/1 st grade) – Minors |

The *Intown Recreational Program* has various leagues broken down by age group starting with the beginners learning the basics of soccer through fun, interactive ball games and small field competitions and continuing through our full field leagues for children up through the 8th grade. Spring clinics will be offered in March.

Girls Director:	Nick Vitti Jr.	203-297-3356	nvittijr@yahoo.com
Boys Director:	Kevin Kurtz		kwkurtz@gmail.com
Intown Program Director:	Matt Chamberlain	203-744-0324	mattchamberln@aol.com

Note- Travel Teams are already formed for spring 2017 however there may be a few openings for new players. Please contact betheltravelsoccer@gmail.com if you are interested.



It's Softball Season!!



Bethel Softball Association
invites you to register for the
2017 Spring season!

Registration is open from January 20 - March 1

Fees:
\$75 per player
\$100 max per family
Register by **MARCH 1**
to avoid \$20 late fee
and/or waiting list
** NO REFUNDS **

Registration
fees include
uniform shirt,
visor, socks
& FUN!



Coaches! Volunteers!
Team/League Sponsors!
We need you!
Email if you are interested



We offer recreational teams for ages PreK 4 - 16.
Spring Season runs April - June.
All skill levels are welcome!!

Sign up today using our **NEW ONLINE** Registration System at
www.leaguelineup.com/bethelsoftball
(or just Google Bethel CT Softball!)

Questions? BethelCTSoftball@gmail.com





BETHEL BASEBALL ASSOCIATION

www.bethel-baseball.com

CAL RIPKEN BASEBALL (ages 4 ½ -12) BABE RUTH DIVISION (AGES 13 – 15)

In-Person REGISTRATION: Held on Wednesday, February 8, 2017 in the Municipal Center Parks and Rec. Office from 9:00-4:30p.m.

*PLEASE USE THE **BASEBALL REGISTRATION FORM**, AVAILABLE AT REGISTRATION, **NOT THE PARKS & REC. FORM.**

Checks should be made payable to "BBA".

All registrations after February 8th will be done ONLINE ONLY.
If you require financial aid please contact Kurt Dyer at kurtrdyer@aol.com.

ONLINE REGISTRATION: Go to the Website -- www.bethel-baseball.com

FEES:

- This registration fee includes hats, uniforms, equipment, and umpires.
- \$125.00 for T-Ball.
- \$135.00 for Rookie Prep
- \$155.00 for Rookie League
- \$160 for Minor League and Major Leagues.
- \$185.00 for Babe Ruth League.
- **THERE WILL BE A FAMILY MAXIMUM FEE OF \$235.00**
- **A LATE REGISTRATION FEE OF \$35.00 WILL BE ADDED TO THE REGISTRATION AFTER March 15, 2017.**
- **No sign-ups will be accepted at Evaluation Days.**
- **NO REFUNDS WILL BE GIVEN FOR ANY REASON.**

LEAGUE INFORMATION

ALL NEW PLAYERS MUST BRING PROOF OF AGE.

League and Fee Breakdown determined by child's age as of 4/30/2017

T-Ball	4 - 6	05/01/2011 - 04/30/2013	\$125
Rookie Prep	6 - 7	05/01/2010 - 04/30/2011	\$135
Rookie	7 - 8	05/01/2008 - 04/30/2010	\$155
Minors	9 - 10	05/01/2006 - 04/30/2008	\$160
Majors	11 - 12	05/01/2004 - 04/30/2006	\$160
Babe Ruth	13 - 15	05/01/2001 - 04/30/2004	\$185
Babe Ruth	16 - 18	05/01/1998 - 04/30/2001	\$185
Families of two or more			\$235

EVALUATION DAYS

WILL BE POSTED ON THE WEBSITE – www.bethel-baseball.com

*******PLEASE VOLUNTEER*******

**MANAGERS/COACHES ARE NEEDED IN ALL LEAGUES – LET US KNOW AT REGISTRATION.
PARENTS ARE ALSO NEEDED TO ASSIST IN RUNNING YOUR CONCESSION STAND.**

For more information please go to the Bethel Baseball Website.

BUSINESSES

**SIGN AND TEAM ADVERTISEMENTS ARE AVAILABLE AT MITCHELL PARK – please email:
dans43@att.net**



BETHEL

YOUTH LACROSSE ASSOC.

EST.
2004

2017 SPRING REGISTRATION

Register at www.bethellacrosse.com

- **GRADE-BASED PLAYER SEGMENTATION.** CONNY lacrosse has adopted a grade-based player segmentation policy for all member programs. The change was driven by the US Lacrosse age-based guidelines and their goal of increasing fairness and player safety. The new policy also addresses the confusing mix of CONNY age-based and grade-based teams that seriously complicated scheduling.
- **EARLY REGISTRATION REQUIREMENTS.** A lot of planning and scheduling with area towns take part in January so knowing how many teams, the competitive level of each, will allow us to better manage the process. Uniform fittings for new players or returning players who need to upsize will need to take place the last week in January.
- **REGISTRATION COST:**
 - **Grades K-2** - \$100.00 (plus annual US Lacrosse Membership \$30.00) includes pinnie, weekly weekend game(s), weekly instructional clinics
 - **Grades 3-8 Returning Players** - \$175.00 (plus annual US Lacrosse Membership \$30.00)
 - **Grades 3-8 New Players** - \$175.00 (plus annual US Lacrosse Membership \$30.00) **New players in grades 3-8 are required to purchase a Game Day Uniform \$60.00 which is theirs to keep and use year over year until they grow out of it.
- **REGISTRATION PAYMENT PLAN OPTION!** – with the early registration requirements BYLA recognizes the need to offer a registration payment plan
 - \$100 time of registration and \$75 due Mid Feb or one-time payment of \$175.00 at time of initial registration
- **TRAVEL PLAYER UNIFORMS (Grades 3-8)** – New players to BYLA or returning players who need to upsize, you can purchase in the Online Store. Boys Shooting Shirts are optional and all ordering will take place following uniform fitting.

Registration opens 11/1/2016 and will close 1/31/2017. Late Registrations after this date will result in an additional \$35.00 late fee.

Rental Protective Equipment Option for New Players - *BOYS under age 11 as of 8-31-2016. Limited to BYLA in stock quantities.* \$35.00 fee with option to purchase at seasons end.

[Register Today! www.bethellacrosse.com](http://www.bethellacrosse.com)



Bethel Supercross BMX

Mitchell Park - Old Hawleyville Road.....go to www.bethelbmx.com for more information

Behind the baseball fields



Our 35th Season Open House April 29th

Rider Registration and
Orientation - 1-3 pm

Membership in USABMX is required
Cost is \$60 for 1 year for 1st family member
Copy of Birth Certificate and parent attendance

More dates to follow check our website

Season begins May 3rd

Sanctioned by **USABMX**

Racing will be held every WEDNESDAY from May 3rd through August 30th.

Race Day registration: 4:30—6:15 ★ Race Day practice: 5:00—6:45 ★ Races begin 7:00

New riders may sign-up at the track any time during the season. Copy of Birth Certificate is required.

Parent(s)/legal guardians of minors must be present.

All racers will need sneakers, full face helmet, long sleeve shirt, long pants, and BMX bike.



Bethel has one of the best BMX tracks in New England. Riders of all ages, 3-60+, compete for trophies and other awards. Track, state, regional and national recognition is given. Our program is fully supervised.

Information: Don or Kathy Olson - 203-744-7962 (home) 203-798-6373 (track)

Spectators are always welcome at no charge.

FOR MORE INFORMATION: www.bethelbmx.com

FEBRUARY– APRIL, 2017 PROGRAMS AT THE BETHEL PUBLIC LIBRARY

Feb. 1	10:30-11:00	Winter Pre-School Storytime for ages 3-5 without adults. No registration required. February 1, 8, 15, 22 and March 1.	
Feb. 1	4:00-5:30	Teen Everyfandom.* February 1, March 1 and April 12	
Feb. 4	10:15-11:45	Poetry Group for Adults age 21+.*	
Feb. 4	12:30-1:30	Teen Improv. Sponsored by the DECD.**	
Feb. 4	2:30-3:30	A Silly Sing-Along With Edward Leonard . For children ages 3-8 with parent/caregiver*.	
Feb. 5	2:00-3:00	Books and Bricks for Kids*. For kids Grades 1-5. February 4 and March 5.	
Feb. 5	2:00-3:30	Valentine's Day Concert with the Deming String Quartet. Sponsored by the DECD.**	
Feb. 6	6:00-7:30	iPad Class.* February 6, March 6 and April 3	
Feb. 6	6:30-7:45	Kathy Leary and Mark Twain.*	
Feb. 8	6:30-7:30	Knights Chess Club for kids Grades 4-7 who understand rules of the game*. February 8, March 8 and April	
Feb. 9	6:30-7:45	Teen Tech Thursdays.* February 9, March 9 and April 6	
Feb. 10	10:30-11:00	Family Fun Storytime. For families with children ages 2 - 6 years old with siblings and their parents/caregivers. No registration required. February 10 and 17.	
Feb. 12	2:00-3:30	Jewelry Making Workshop. Sponsored by the DECD.**	
Feb. 14	10:30-11:15	One-on-One Demo for Parents*. For parents of children in Grades 2-5.	
Feb. 15	6:00-7:45	Writers Group for Adults age 21+. Facilitated by Linda Chiara. February 15, March 15 and April 19. Sponsored by the DECD.**	
Feb. 20	6:30-7:45	Evening Book Discussion: A Spool of Blue Thread by Anne Tyler.	
Feb. 22	10:15-11:30	Morning Book Discussion: A Spool of Blue Thread by Anne Tyler.	
Feb. 22	6:30-7:30	Pages' Chess Club for kids Grades 1-3 who understand the rules of the game*. February 22 and March 22.	
Mar. 10		Terrific Twos Program for kids age 2 years old by March 10 with a parent/caregiver; siblings may not attend. No registration required. March 10, 17, 24, 31 and April 7.	
Mar. 15	6:00-8:00	Movie and Classic Book Discussion Series: In the Heart of the Sea.* Rated PG-13	
Mar. 22	6:30-7:30	Social Security Seminar with Financial Advisor Helen Curtin.*	
Mar. 22	6:30-7:45	Quarterly Classic Book Discussion: Moby Dick by Herman Melville.	
Mar. 27	6:30-7:45	Evening Book Discussion: TBA.	
Mar. 29	10:15-11:30	Morning Book Discussion: TBA.	
Apr. 12	7:00- 8:00	Author Talk and Book Signing with local author James Smith.*	
Apr. 22	10:15-11:30	Teen Black-Out Poetry.*	
Apr. 24	6:30-7:45	Evening Book Discussion: TBA.	
Apr. 26	10:15-11:30	Morning Book Discussion: TBA.	
		Call (203) 794-8756 ext. 4 for more information, or go to www.bethellibrary.org	

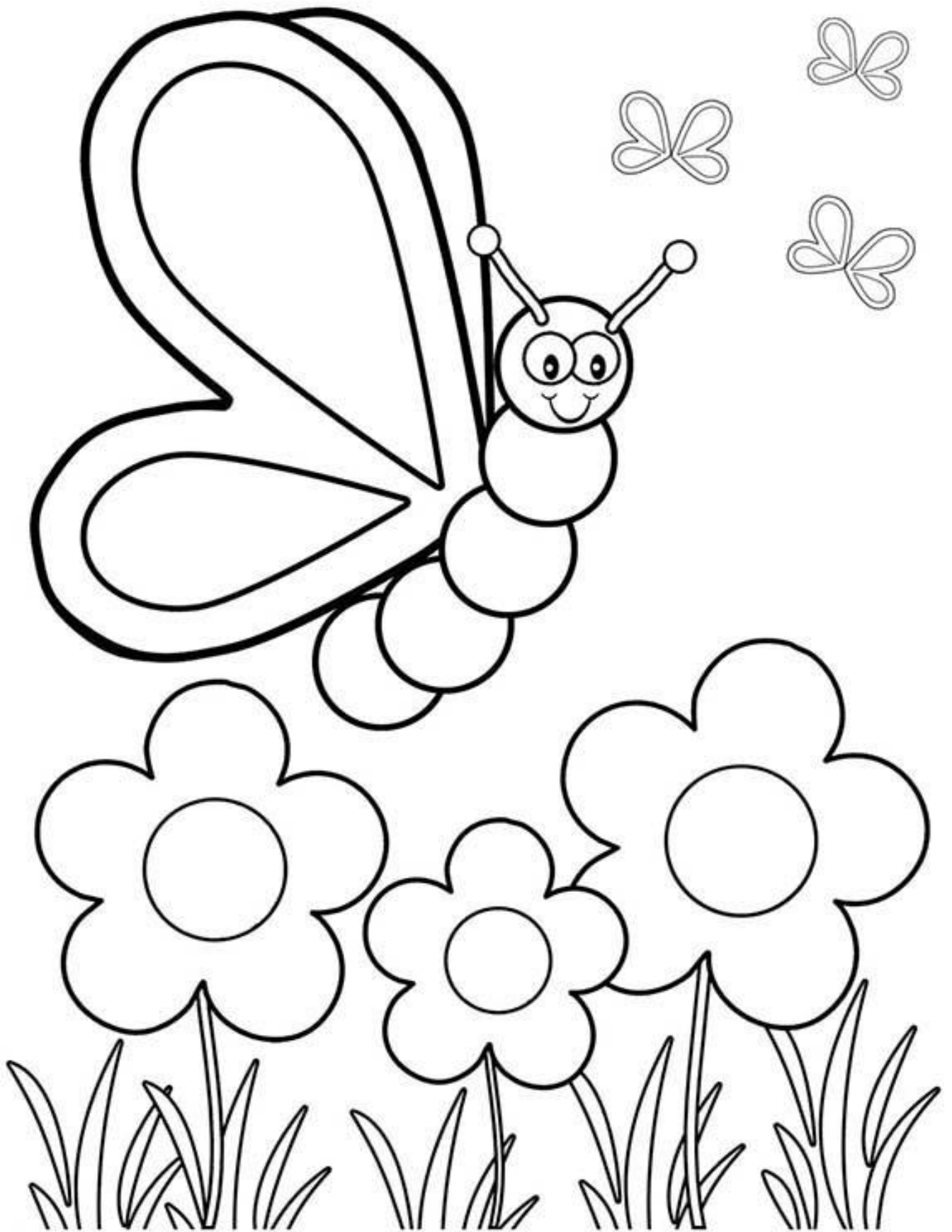
*Requires registration.

Most programs take place in the Maria Parloa Community Room, Cady R. Morse Conference Room,
And the Children's Programming Room at the Library, 189 Greenwood Avenue.

**Supported in part by the Cultural Alliance of Western Connecticut in partnership with the Connecticut
Department of Economic and Community Development, the Office of the Arts,
and the National Endowment of the Arts.

All programs sponsored by the Bethel Public Library are open to the public, and meet accessibility requirements
for the disabled. Those needing special accommodations should contact the library at least two weeks
before the program date to make arrangements.







BETHEL EDUCATION FOUNDATION

PRESENTS A FUNDRAISER TO SUPPORT INNOVATION, CREATIVITY AND EXCELLENCE IN OUR SCHOOLS

11TH ANNUAL

BARNUM BALL

A ROARING GOOD TIME



SATURDAY, MARCH 18, 2017

ALL INCLUSIVE 6:30-8:30PM

BEVERAGES ADDITIONAL AFTER 8:30PM

ETHAN ALLEN HOTEL

\$105 OVERNIGHT RATE
MENTION THE BARNUM BALL WHEN
MAKING YOUR ROOM RESERVATION

DINNER & DANCING
LIVE & SILENT AUCTION

\$80 PER PERSON
\$750 TABLE OF 10

PURCHASE YOUR BALL TICKETS ONLINE AT
WWW.BETHELEDFOUNDATION.ORG

Order your tickets by Feb. 20 to be entered into a drawing for overnight accommodations for the Ball

ORDER YOUR TICKETS TO THE BARNUM BALL ONLINE OR SEND THIS PORTION TO SCHOOL WITH YOUR CHECK BY TUESDAY, MARCH 7TH

Order your tickets by Feb. 20 to be entered into a drawing for overnight accommodations at Ethan Allen for the Ball * generously donated by Ethan Allen Hotel

Yes! I'm looking forward to the Barnum Ball on March 18th
Enclosed is my check for:

- # ____ tickets x \$80 = \$ _____
- Table of 10 = \$750 (you can include separate checks, but payment must be paid in full)
Please list all names on the back of this form

Sorry, I can't make it!
Here's a donation to support school grants \$ _____

Name _____
please list each name for this reservation
if purchasing a full table, please include all names on the back of this form

Address _____

Phone _____

Email _____
An email confirmation will be sent once payment is received

Please seat me with _____

We will email you to select your meal choices shortly.

Mail to: PO Box 92, Bethel, CT 06801
Checks payable to Bethel Education Foundation
Questions? Email: BethelEdFoundation@gmail.com

THANK YOU TO OUR SPONSORS



IS YOUR BUSINESS LOOKING TO SUPPORT INNOVATIVE PROJECTS IN THE BETHEL SCHOOLS?

SUPPORT OUR SCHOOLS

Become a sponsor, advertise in the Ball book, or donate an auction item!
Go to www.BethelEdFoundation.org and click on the Support Our Work Tab



It's Softball Season!!



Bethel Softball Association
invites you to register for the
2017 Spring season!

Registration is open from January 20 - March 1

Fees:

\$75 per player
\$100 max per family
Register by **MARCH 1**
to avoid \$20 late fee
and/or waiting list

**** NO REFUNDS ****

Coaches! Volunteers!
Team/League Sponsors!
We need you!
Email if you are interested



Registration
fees include
uniform shirt,
visor, socks
& FUN!



We offer recreational teams for ages PreK 4 - 16.
Spring Season runs April - June.
All skill levels are welcome!!

Sign up today using our **NEW ONLINE** Registration System at
www.leaguelineup.com/bethelsoftball
(or just Google Bethel CT Softball!)

Questions? BethelCTSoftball@gmail.com

